

Telpo K20

Self-service Kiosk



Windows 10



27" Screen



NFC



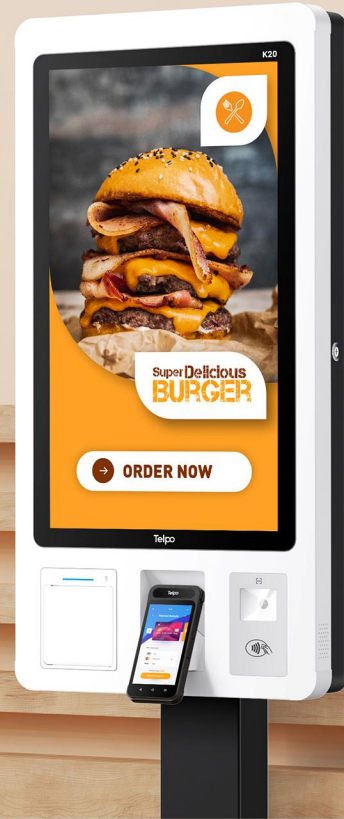
QR Code



80mm Printer



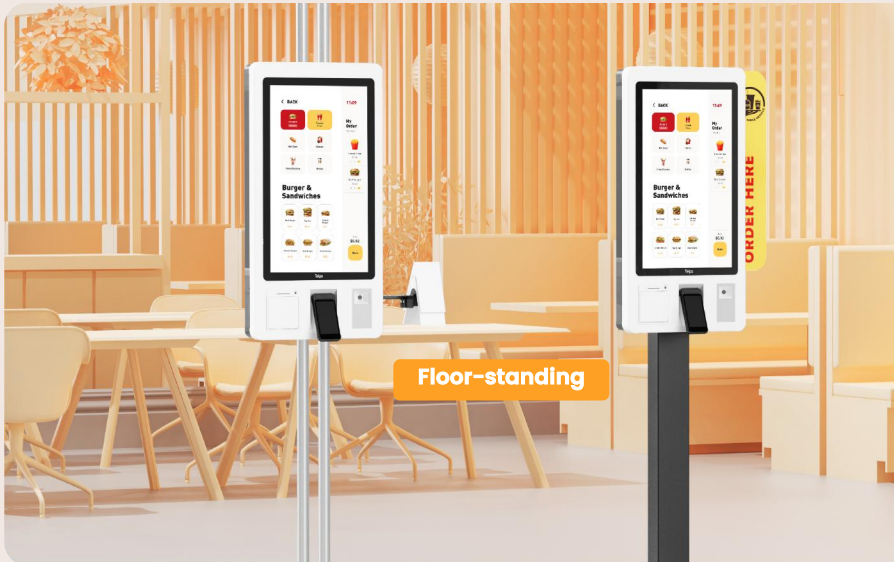
Payment



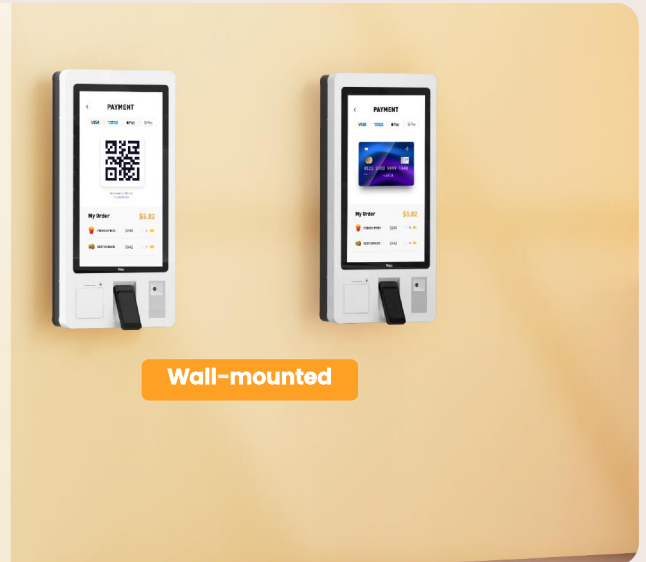
27" High-Definition Screen



Modular Design, Simple Dismounting



Floor-standing



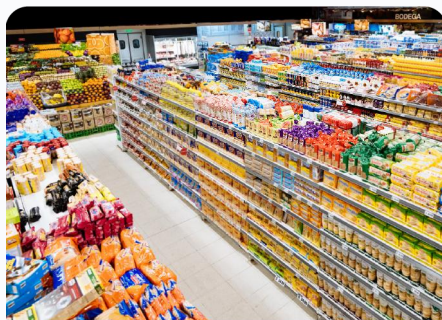
Wall-mounted

K20 Self-service Kiosk

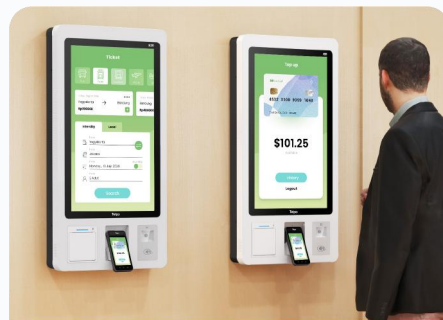
Applications



Restaurant



Supermarket



Ticket Office

Specifications

OS	Windows 10 IoT Enterprise
Processor	13th Generation Intel Core i3-1315U
Memory	8GB RAM, 256GB ROM
Display	27" , 1080*1920
Thermal Printer	Paper width: 80mm, Φ 80mm, with auto cutter Print speed: 150mm/s
1D/2D Barcode Scanner	Support
※ Face Recognition Camera	Dual-lens Camera
※ Payment	Support various EMV module
Communications	Wi-Fi/Bluetooth/Ethernet

Peripheral Ports	1 DC, 1 DB9, 1 HDMI, 1 RJ45, 2 USB Type-A 3.0, 2 USB Type-A 2.0, 1 Audio Jack
Audio	Digital Audio Speaker
Contactless Card Reader	ISO14443 Type A/B, Mifare
Power Supply	AC 100-240V 50/60HZ 0.5A
※ Stand	Wall-mounting Bracket Floor-stand
Dimensions (mm)	887(L)*445(W)*100(H)
Shipping Box Dimensions (mm)	957(L)*585(W)*168(H)
Weight (kg)	about 24.5
Environmental	Operating temperature: -5°C ~ 45°C Storage temperature: -25°C ~ 60°C

※Optional Datasheet may be revised or amended by product specs.

Telpo Technology Co., Ltd.

🌐 www.telpo.com.cn ✉ business@telpo.com ☎ +86 18603080594 📍 Foshan City, Guangdong Province, China

©Copyright 2026 Telpo Technology Co., Ltd. All Rights Reserved. VersionVersion 1.0 Latest Updated on January 6, 2026

